



Composite Packaging Boxes

APRIL 27TH, 2021



COMPOSITE PACKAGING– STACK VIEW



- **Stacked Containers:** Note two high is the max we recommend for stability.
- **Container Dimensions:** (See specification sheet for complete details)

CONTAINER (320856)		DRAWING
Manufacturer: Packgen, Auburn, ME		
Description:	Corrugated Sleeve Wrapped in 8 Oz. White Woven Polypropylene with (4) Lifting Loops and Interior Liner. Sure Fit Support Straps: (2) Top Edge of Shell (1) At bottom made from two strips fabric reinforced tape.	
Tare Weight:	20.2 Kg (with Inner Liner)	
Overall Dimensions:		
• Length	42"	
• Width	42"	
• Height	38-3/4"	
Markings (QC Audit):	CA200640035	

COMPOSITE PACKAGING– OUTER VIEW



- Pallets are two-way entry for forklifts.

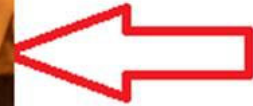
COMPOSITE PACKAGING– PALLET DETAIL



Lip to hold
bag in place

- Zoom-In of the pallet, which has a “lip” that holds the container in place during filling/shipping.

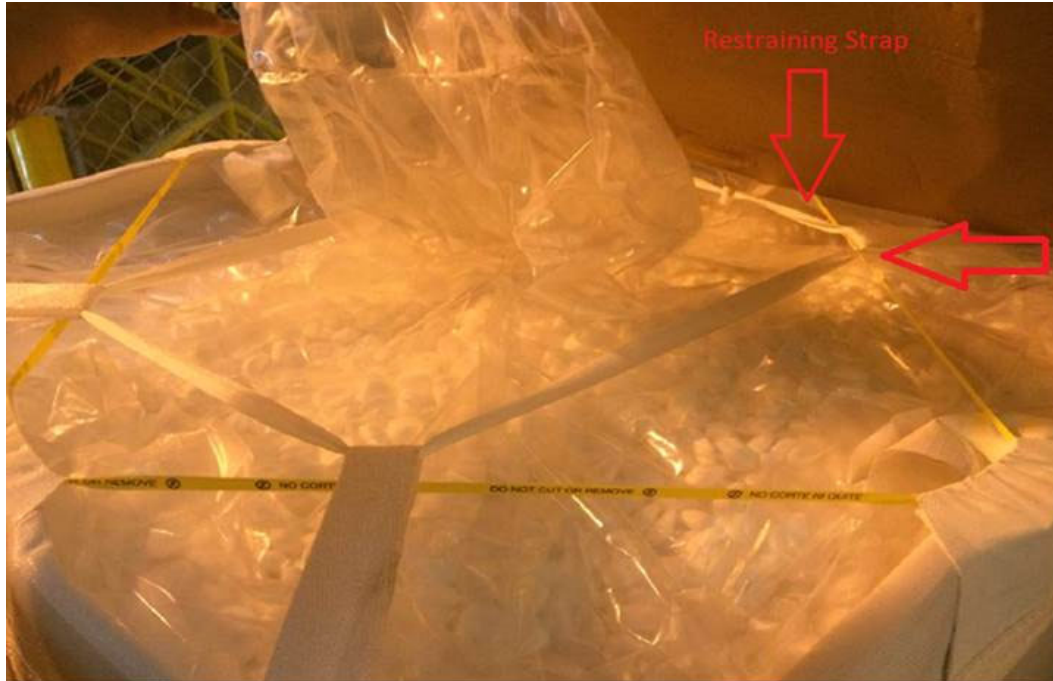
COMPOSITE PACKAGING– COLLAPSED VIEW



Lifting Straps

- Collapsed empty container.
- Lifting straps shown.

COMPOSITE PACKAGING– INTERIOR VIEW



Restraining
Strap

- Photo of container without the lid.
- Once the lid is removed, the lifting loops can be accessed to lift the bag off the pallet.
- There are restraining straps that holds the lifting straps in place during shipment. The lifting straps at each corner are easily removed by pulling the loose end of the thin white strap that is threaded through each of the loops.

COMPOSITE PACKAGING– INTERIOR VIEW



- The boxes have wooden support boards (1/2" x 3 1/2" x 38") at each of the four corners, and at the middle of each side.

COMPOSITE PACKAGING– SHIPPING



- The bags are subject to “bellying” in the middle during the filling process.
- The belly will add less than 1.5” on each side.
- Overall assembled dimensions may vary slightly but 20 bag/boxes will fit comfortably in a sea container.